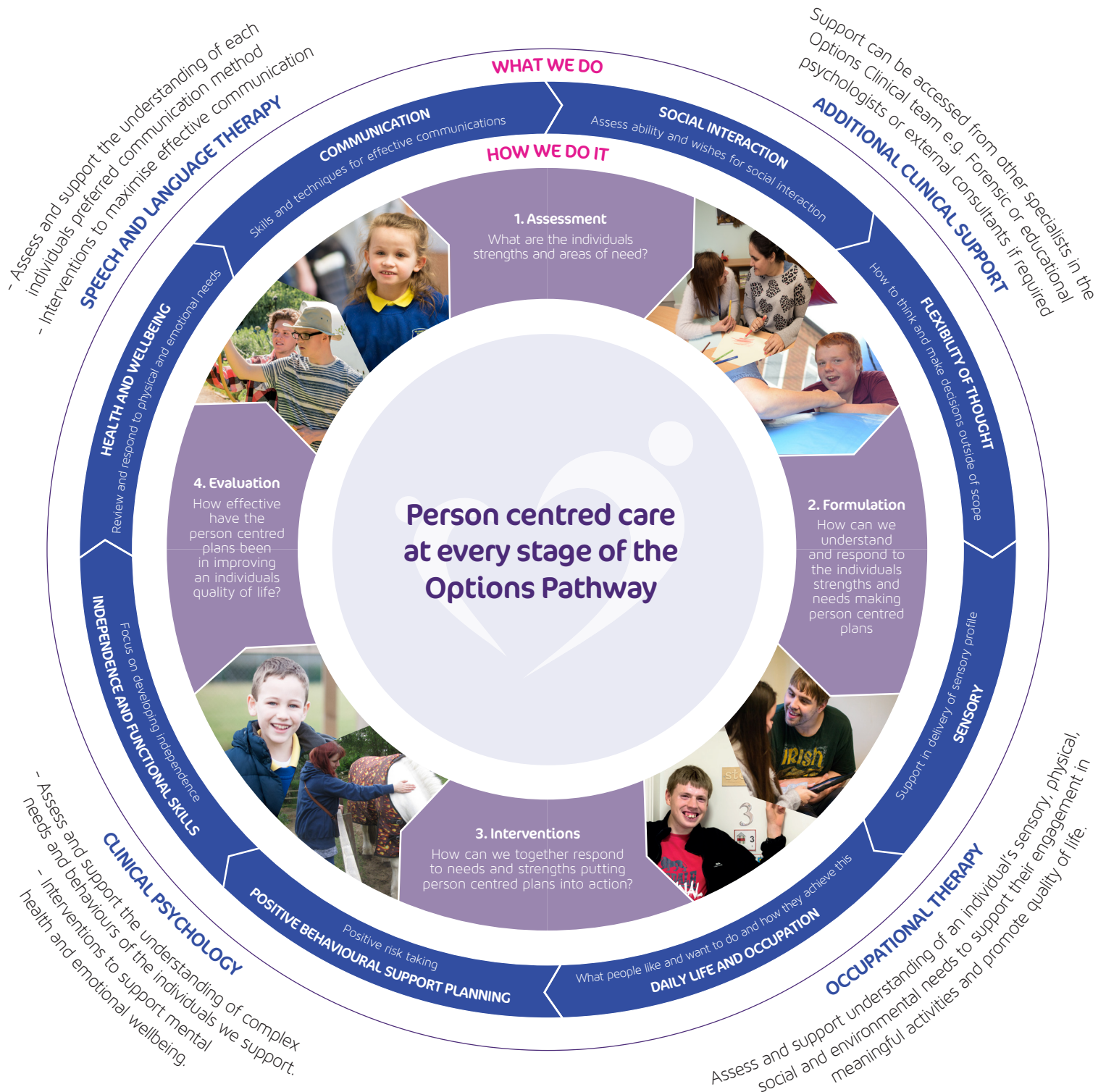


Our Clinical Approach

Our model looks at the individual as a whole to allow the clinical team to work in a joined up approach across our residential and education settings. This shared understanding gives the teams a way of supporting the individuals in our care to ensure the best outcomes. Through this holistic approach we are able to work with each individual to devise a person centred plan which best meets their needs.



Our in-house clinical teams offer dynamic, adaptable and compassionate support to work towards positive goals reaching the desired outcomes of each individual.

We provide...

Bespoke Multi-Disciplinary Teams of Clinicians which reflect the specific needs of the individuals we support within each of our specialist services.

A dedicated team **offering a continuity of relationship and service** to both staff and the individuals we support.

A Clinical Lead coordinating all clinical intervention and **offering a single point of contact** for our external partners.

On site expertise to guide and support the practitioners at the time needed and not by 'appointment'.

Time allocation that **recognises the importance of supporting individuals** through attendance at and or reporting into planning and review meetings.

Ability to **undertake assessments and provide therapeutic interventions** which consider the individual within all areas of their life.

With the ability to operate at multiple layers of the organisation our Clinical Teams support our services to **deliver the very best evidence led practice** within enabling environments with measurable outcomes.

Each service has the ability to **access the full range of Clinical Specialisms** employed across our different specialist services so they are able to respond to newly identified, time limited or changing needs of the individual thus reducing the need for anxiety inducing transitions and possible placement disruption.

*(The weekly cost for this is less than the average cost of one independently commissioned clinical assessment)

Our clinical team and staff continuously work together to ensure the highest standard of care, education and support.

